

STRUMENTAZIONE
INDUSTRIALE SRL

Manometri differenziali

*Differential Pressure
Gauges*



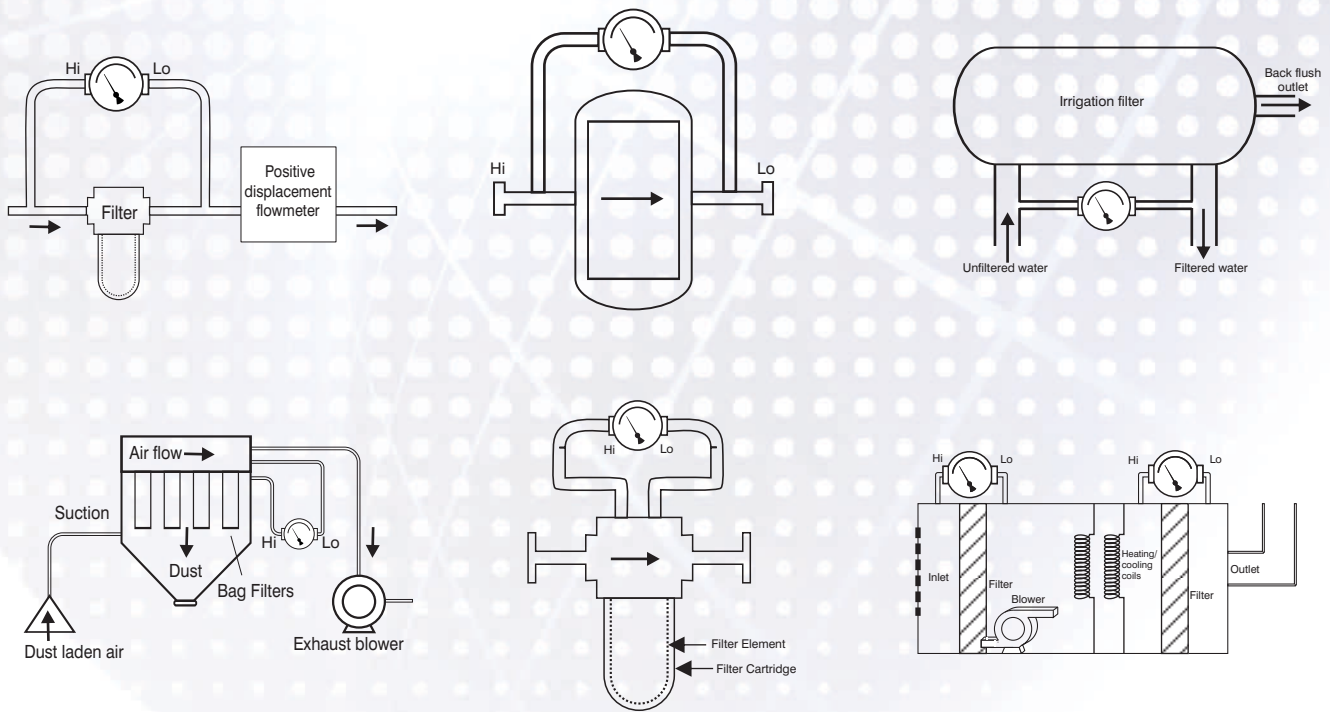
- Monitoraggio del filtro
- Monitoraggio del flusso
- Misurazione del livello
- Monitoraggio della pressione

Applications

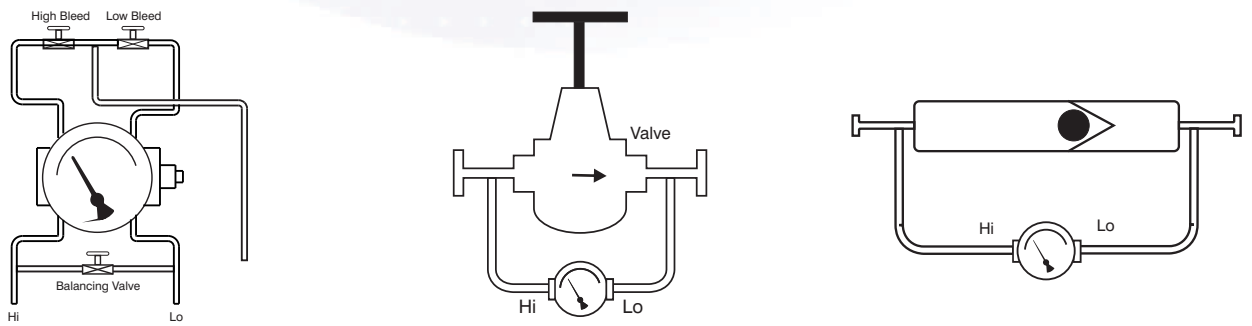
Applications

A few of the applications of our differential pressure gauges are mentioned below. For additional detail, please contact us.

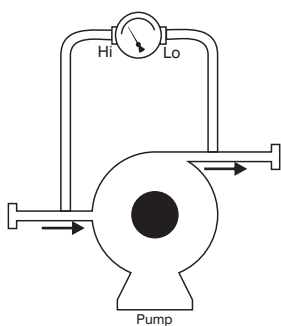
Filter Monitoring



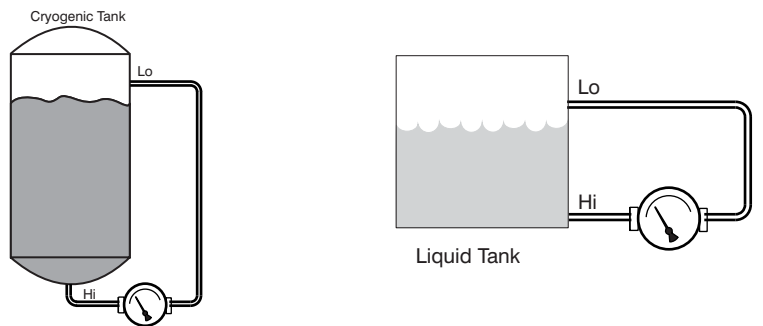
Flow Monitoring



Pressure Monitoring



Level Measurement





HL.200DPG

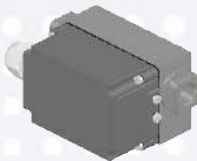
DP Range: 0 to 0.15 upto 70 bar
0 to 1.5 upto 1050 psi

COMBINATIONS

Gauge

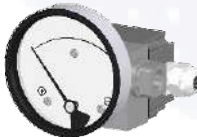


Switch



Gauge + switch

(with a terminal strip inside)



Gauge + switch

(with a DIN plug on top)



MOUNTING BRACKETS

Surface mounting



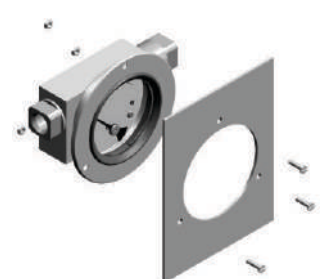
Horizontal pipe mounting



Vertical pipe mounting



Panel / Flange mounting



Specifications

Accuracy	±2% of the FSD (Ascending)
Migration	Minor from high to low port
Range	0-0.15 bar to 70 bar or equivalent range in other units
First marking on the scale	20% of the FSD
Sensing element	Piston
Wetted parts	Body material, SS 302 spring, ceramic magnet & seals
Case material & dial size in mm	Stainless steel (SS 304): 50, 63, 80, 100, 115, 150
Engineering polymer:	63, 115, 150
Bayonet:	100, 150
Mounting	Direct, front flange, 2" pipe & surface mounting
Maximum working pressure	200 bar (Aluminum, Brass) ; 400 bar (SS 316, Monel)
Maximum process temperature	0 to 80°C ; Others on request
Body material	Aluminum, Brass, SS 316 & Monel
Seals	Buna-N, Viton, EPDM, Teflon
Window	Float glass(Std.), toughened glass, acrylic & safety glass.
Connection	1/4" NPT(F) (Std.), 1/4" BSP(F) and others through adaptor
Porting	In-line, rear, bottom, in-line & bottom, in-line & back
Over range protection	Up to the max. working pressure from high & low side
Protection for gauge & switch	IP 66 / NEMA-4X

Options

Liquid filling (glycerine/ silicone)	1 or 2 SPSTs with a DIN plug
Red follower pointer	1 or 2 SPSTs with a terminal strip
Customer logo	1 or 2 SPSTs with a built in relay
Dual scale	1 or 2 SPSTs with a DIN plug
Color band	1 or 2 SPSTs with a terminal strip
Filter mesh in (+) connection	
Reverse port (pointer moves from right to left)	
Descending calibration	
Thick body for 450bar application	

Switches (Adjustable in 20-100% of FSD)

1 or 2 SPSTs with a DIN plug
1 or 2 SPSTs with a terminal strip
1 or 2 SPSTs with a built in relay
1 or 2 SPSTs with a DIN plug
1 or 2 SPSTs with a terminal strip

Available in engineering polymer (EP) Case



- Removable glass
- Strong and durable
- Panel mounting possible
- Condensation can be cleaned
- Light weight

6.0"

4.5"

2.5"



HL.300DGC

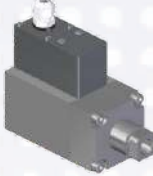
DP Range: 0 to 0.075 upto 4 bar
0 to 1 upto 60 psi

COMBINATIONS

Gauge



Switch



Gauge + switch (with a terminal strip inside)

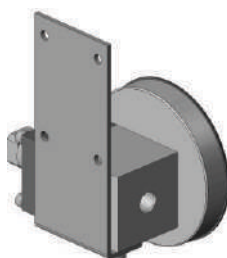


Gauge + switch (with a DIN plug on top)



MOUNTING BRACKETS

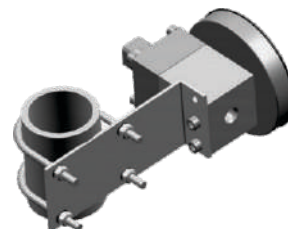
Surface mounting



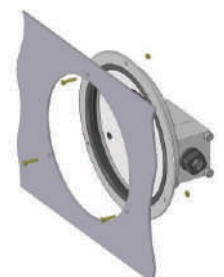
Horizontal pipe mounting



Vertical pipe mounting



Panel / Flange mounting



Specifications

Accuracy	±2% of the FSD (Ascending)
Migration	No migration ; Zero leakage from high to low port
Range	0-0.075 upto 0-4 bar or equivalent ranges in other units
First marking on the scale	15% of the FSD
Sensing element	Diaphragm
Wetted parts	Diaphragm, body material, SS 302 spring & ceramic magnet
Case material & dial size in mm	Stainless steel (SS 304): 50, 63, 80, 100, 115, 150
Engineering polymer:	63, 115, 150
Bayonet:	100, 150
Mounting	Direct, front flange, 2" pipe & surface mounting
Maximum working pressure	100 bar
Maximum process temperature	0 to 80°C ; Others on request
Body material	Aluminum, Brass, SS 316 & Monel
Diaphragm	Buna-N, Viton, EPDM, Silicone
Window	Float glass (Std.), toughened glass, acrylic & safety glass
Connection	1/4" NPT(F) (Std.), 1/4" BSP(F) and others (through adaptor)
Porting	In-line, rear, bottom, bottom & vent, in-line & vent, in-line & bottom, in-line & back, bottom vent & inline
Over range protection	Up to the max. working pressure from high side
Protection for gauge & switch	IP 65 / NEMA-4

Options

Liquid filling	1 or 2 SPSTs with a DIN plug
Red follower pointer	1 or 2 SPSTs with a terminal strip
Customer logo	1 SPST with a built in relay
Dual scale	1 or 2 SPDTs with a terminal strip
Colour band	1 or 2 SPDTs with a DIN plug
Filter mesh in (+) connection	
Descending calibration	

Switches (Adjustable in 30-100% of FSD)

1 or 2 SPSTs with a DIN plug
1 or 2 SPSTs with a terminal strip
1 SPST with a built in relay
1 or 2 SPDTs with a terminal strip
1 or 2 SPDTs with a DIN plug

Instrument can be calibrated with square root scale for flow measurement.

Available in engineering polymer (EP) Case



- Removable glass
- Strong and durable
- Panel mounting possible
- Condensation can be cleaned
- Light weight



HL.600DGC

DP Range: 0 to 10 upto 1250 mm H₂O
0 to 0.4 upto 50 inch H₂O

COMBINATIONS

Gauge



Specifications

Accuracy	±3% of the FSD (Ascending)
Migration	No migration ; Zero leakage from high to low port
Range	0-10 to 0-1250 mm water or equivalent ranges in other units
First marking on the scale	15% of the FSD
Sensing element	Diaphragm
Wetted parts	Diaphragm, body material, SS 302 spring & ceramic magnet
Case material & dial size in mm	Stainless steel (SS 304): 112
Mounting	Flush (Std), Direct, front flange, 2" pipe & surface mounting
Maximum working pressure	2.4 bar (35psi)
Maximum process temperature	0 to 60°C (32 to 140°F)
Body material	Engineering Polymer
Diaphragm	Buna-N, Viton, EPDM, Silicone
Window	Float glass (Std.), toughened glass, acrylic & safety glass
Connection	1/8" NPT (F)
Porting	In-line, back, in-line & back
Over range protection	Up to the max. working pressure from high side
Protection for gauge & switch	IP 65 / NEMA-4

Options

Liquid filling (glycerine/ silicone)
Red follower pointer
Customer logo
Dual scale
Color band
Filter mesh in (+) connection
Descending calibration

Switches (Adjustable in 30-100% of FSD)

1 or 2 SPSTs with a DIN plug
1 SPDT with DIN plug

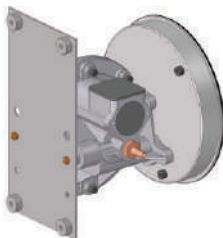
Switch can be added anytime on the field

Accessories supplied with instrument



MOUNTING BRACKETS

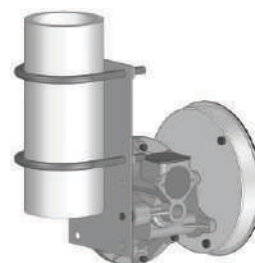
Surface mounting



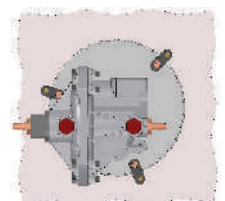
Horizontal pipe mounting



Vertical pipe mounting



Panel / Flange mounting





HL.115DPG

DP Range: 0 to 0.15 upto 2 bar
0 to 3 upto 30 psi

COMBINATIONS

Gauge



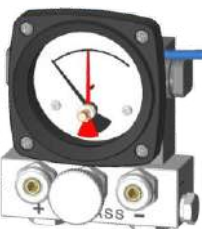
Gauge+Switch



Gauge+Manifold



Gauge+Manifold+switch



Specifications

Accuracy	±20% of the FSD (±10% on request) Ascending
Migration	Minor from high to low port
Range	0-0.15 to 0-2 bar or equivalent range in other units
First marking on the scale	20% of the FSD
Sensing element	Piston
Wetted parts	Body material, SS 302 spring, ceramic magnet & seals
Case material & dial size in mm	Engineering polymer: 63
Mounting	Direct
Maximum working pressure	100 bar
Maximum process temperature	-20° C to 60° C (-4° F to 140° F)
Gauge Body material	Aluminum, SS316L
Diaphragm	Buna-N, Viton
Window	Acrylic Glass
Connection	1/4" BSP(F), others on request
Porting	Bottom
Over range protection	Up to the max. working pressure from high & low side
Protection for gauge & switch	IP 66

Options

Red follower pointer
Customer logo
Dual scale
Colour band
Descending calibration

Switches (Adjustable in 30-100% of FSD)

1 SPST with 2m blue Ex-I cable
1 SPDT with 2m blue Ex-I cable

3 way manifold

Connections	1/4" BSP
Max. working Pressure	100 bar
Pneumatic test	110 bar
Hydrostatic test	150 bar
Body material	Steel EN1A Pb
PIN	Brass (IS:319/89I)
O-Rings	Buna-N



We also offer the following range or products

Ex d IIC T6 IP 66 Approved



Switch in ATEX approved box



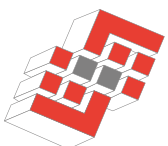
Center Zero Instruments



Filter Clogging Indicators



Notes



**STRUMENTAZIONE
INDUSTRIALE SRL**

Strumentazione Industriale Srl

Via Barro 56/58
28045 Invorio (NO) Italy

Phone: +39 0322 259233
Fax: +39 0322 259488
Email: info@strumentazione.com

All specifications are subject to change without notice.

Represented by